

Early recognition of Malignant Melanoma is becoming increasingly important in Dermatology. In Germany the annual increase in reported new cases is between 5 and 10%. In parts of the world with a fair-skinned population the incidence has almost doubled in the last 15 years. Early recognition and diagnosis is the key to improved healing rates. HEINE Optotechnik's long experience as market leader in Dermatoscopy has enabled us to set a new standard for image quality with the DELTA 20 Dermatoscope.

HEINE DELTA 20® Dermatoscope

Dermatoscope with LED illumination



▷ Homogeneous, bright LED light

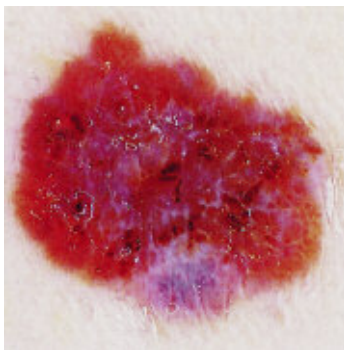
▷ High-resolution optics

▷ Diagnosis and documentation

For dermatoscopic examination of pigmented skin lesions and early diagnosis of malignant melanoma. Dermatoscopy oil is applied to the skin to make the outer skin layers more transparent. The DELTA 20 makes structure changes visible. The differential diagnosis of initial malignant melanoma and other pathologies is made easier and more accurate with DELTA 20.

- ▷ **High-resolution optics with achromatic lenses system.** 10x magnification, distortion-free edge-to-edge, very large, highly-detailed image.
- ▷ **LED illumination close to daylight.** 6 LEDs or, alternatively, lateral illumination from 3 LEDs for improved contrast, virtually unlimited working life.
- ▷ **Adjustable Eyepiece.** Individual focusing, range of correction -6 to +6 dpt.
- ▷ **Detailed compendium with photographic atlas included.** Simplifies the differential diagnosis of pigmented lesions.
- ▷ **Digital photography with the dermatoscope** when combined with an adaptor for a digital SLR camera.

(For more information, see the DELTA 20 LED Dermatoscope Brochure).



DELTA 20 Dermatoscope Head	2.5V/3.5V LED
with contact plate 23 mm dia. with scale and dermatoscopy compendium	K-008.34.201
same, without scale	K-008.34.207
DELTA 20 Dermatoscope Head without contact plate	K-008.34.202



DELTA 20 Dermatoscopy Set	2,5V LED	3,5V LED
Consisting of DELTA 20 Dermatoscope, contact plate 23 mm dia. with scale, 10 ml dermatoscopy oil, dermatoscopy compendium, hard case, complete with BETA battery handle	K-256.10.118	
same, with BETA R rechargeable handle		K-256.20.376
same, with BETA TR rechargeable handle with transformer		K-256.20.384
same, with BETA NT rechargeable handle with NT 200 charger		K-256.20.420



Please note: BETA 3.5V rechargeable handles can be supplied with a Lithium battery (X-007.99.381) with increased capacity and no memory effect at extra cost. To order HEINE sets with 3.5V BETA handle with Li-ion battery technology, use the number "27" in the voltage designation, e.g. K-256.27.420 for DELTA 20 Dermatoscope Set with BETA NT handle and charger.



HEINE alpha+® Dermatoscope

A Dermatoscope in compact form



High-quality instrument in compact form with 10x magnification. Adjustable focus. Threaded connector. Available with 3.5V XHL Xenon Halogen Technology for super bright illumination.

- ∴ **10x magnification.** Large, high-resolution image.
- ∴ **Solid metal construction.** Durable and tough.
- ∴ **Detailed, illustrated instruction book.** Makes differential diagnosis easier.
- ∴ **XHL Xenon Halogen Technology.**

alpha+ Dermatoscope	2.5V	3.5V
alpha+ Dermatoscope, head only, with contact plate	D-001.84.101	D-002.84.101
same, with alpha+ battery handle, dermatoscopy oil	D-001.84.110	
same, with alpha+ rechargeable handle and dermatoscopy oil (10 ml)		D-002.84.111
same, with alpha+ rechargeable handle, alpha+ NT 200 B charger and dermatoscopy oil		D-002.84.112
alpha+ Dermatoscope, head only, with contact plate with scale	D-001.84.102	D-002.84.102
same, with alpha+ battery handle, dermatoscopy oil	D-001.84.113	
XHL Xenon Halogen spare bulb	X-001.88.034	X-002.88.053

HEINE mini 3000® Dermatoscope

A Dermatoscope in a handy pocket format



∴ Modern pocket dermatoscope

∴ Solid metal construction

Modern pocket dermatoscope in a compact design with high-quality optics. 10x magnification with focusing optics. Metal threaded connector. Can only be used with the mini 3000 handle system.

- ∴ **10x magnification.** Large, high-resolution image.
- ∴ **Solid metal construction.** Durable and tough.
- ∴ **Enhanced XHL Xenon Halogen Technology for more light.** Very bright, concentrated white light for perfect illumination.
- ∴ **Attachment clip with integrated on/off switch.** Secure. Switches off automatically when returned to the pocket.
- ∴ **Detailed compendium with photographic atlas included.** Simplifies the differential diagnosis of pigmented lesions.
- ∴ **2-piece handle and head.** Easy to maintain, flexible.
- ∴ **High-quality handle: Chrome-finish upper section/refined plastic.** Shockproof, sturdy, non-slip.
- ∴ **Replaceable batteries.** Size AA.

mini 3000 Dermatoscope	2.5V
mini 3000 Dermatoscope with contact plate, mini 3000 battery handle and 10 ml dermatoscopy oil	D-001.78.107
with contact plate, with bulb, without handle	D-001.78.106
mini 3000 Dermatoscope with contact plate with scale, mini 3000 battery handle and 10 ml dermatoscopy oil	D-001.78.109
with contact plate with scale, with bulb, without handle	D-001.78.108
XHL Xenon Halogen spare bulb	X-001.88.109

Accessories

for the DELTA 20 Dermatoscope



Contact plate, 23mm dia. without scale	K-000.34.203
Contact plate, 23mm dia. with scale	K-000.34.204
Small contact plate, 8mm dia. for the examination of inaccessible lesions	K-000.34.205



Dermatology oil (pack of 6 x 10ml) is applied to the external skin layers, making them transparent	K-000.34.005
--	--------------



SLR Photo adaptor for Dermatoscope/Digital SLR Camera, with Optics. Wide Field of View, Crisp Image.	K-000.34.185
SLR Photo adaptor for Canon	K-000.34.186
same, for Nikon	K-000.34.187



Adaptor cord (1.3 m) for instrument/handle	X-000.99.231
--	--------------



BETA Belt Clip for BETA handle	X-000.99.008
--------------------------------	--------------

Photo Accessory Set (not shown) includes SLR Photoadaptor, Adaptor cord and BETA Belt Clip	
Photo Accessory Set for Canon	K-000.34.190
same, for Nikon	K-000.34.191
same, for Olympus	K-000.34.192

Accessories

for alpha+ and mini 3000 Dermatoscope



Contact plate without scale for alpha+ (colour: blue)	D-000.84.105
same, for mini3000	D-000.78.116

Contact plate with scale for alpha+ (colour: blue)	D-000.84.106
same, for mini3000	D-000.78.117



Small contact plate, 8mm dia. for the examination of inaccessible lesions	K-000.34.008
--	--------------



Dermatology oil (pack of 6 x 10ml) is applied to the external skin layers, making them transparent	K-000.34.005
--	--------------